



For more information visit deaf.org.nz
Visit Learn NZSL, a free new learning portal, at www.learnNZSL.nz

www.givealittle.co.nz/org/deafaoteaora

givealittle
from the Spark Foundation

DONATE NOW

WE NEED YOUR SUPPORT
As a not-for-profit organisation, Deaf Aotearoa raises funds to pay for annual operational costs and to fund specific projects. Your donation will ensure Deaf Aotearoa can continue to work with Deaf people throughout New Zealand.

GIVE THESE SIGNS A GO! SIGN WITH YOUR WHĀNAU, FAMILY AND FRIENDS.

Learn more at deaf.org.nz and with the online NZSL dictionary at nzsl.vuw.ac.nz, also available as an app.



Promoting Deaf culture,
New Zealand Sign Language
and the interests of the
Deaf community.

deaf.org.nz





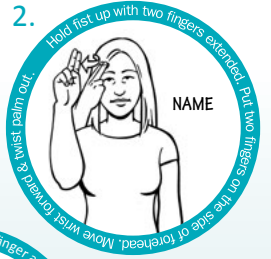
Deaf Aotearoa works with Deaf New Zealanders to ensure they can access the information and services needed to live independently, take part in vibrant Deaf communities and follow their dreams.

New Zealand Sign Language (NZSL) is unique to New Zealand and one of our official languages. It is a combination of hand shapes, facial expressions and body movements and a whole lot of fun for anyone to learn and use.

For more information please visit deaf.org.nz

NZSL ALPHABET

Have fun with your whānau, family and friends. Learn your name and teach others theirs!



NOTE: NZSL has a different grammar structure to English. Just sign 'my name what?' then fingerspell your name.

